



# PARTS CATALOG

Published 2012/11 (Nov.)

0CW10-G79500

# P R E F A C E

1. This parts catalog is the 1st edition of L100N5EL2C9HAPM for PRAMAC.

Pub.No. : 0CW10-G79500

Published : November, 2012

2. Model name

Engine model	Vehicle	Vehicle made by
L100N5EL2C9HAPM	GENERATOR	PRAMAC

## Directions for the Parts Catalog.

1. This Parts Catalog shows both standard and optional parts.
2. Parts may change without prior notice.
3. The following is an example of the Parts Catalog format.

REF.	LEV.	PARTS NO.	DESCRIPTION	Q'TY						I	R
				(A)	(B)	(C)	(D)	(E)	(F)		
1	1	729595-51390	FUEL INJECTION PUMP	1	1	1	1	1			1
1-1	1	729595-51391	FUEL INJECTION PUMP	1	1	1	1	1		N	1
		(A=E00185) (B=E00200)									
3	2	26022-060162	SCREW M 6X 16	9	9	9	9	9			
3-1	2	26022-060162	SCREW M 6X 16	4	4	4	4	4		K	
		(A=E00156) (B=E00156) (C=E00156) (D=E00156) (E=E00156)									
4	2	129470-51040	CAMSHAFT	1	1	1	1	1			
5	2	122710-51050	BEARING, ROLLER	2	2	2	2	2			
6	2	129470-51060	RETAINER	1	1	1	1	1			

Remarks
(1) BOOST COMPEMSATOR TYPE. OPTIONAL PART, TO E00155,(4JH-DT, 4JH-DTZ

### ① Ref. No.

The Ref. No. listed may not be in accordance with the illustration Ref. No.

(Ex.) Illustration No.

List Ref No.

1

1

(Before change)

1-1

(After change)

For interchangeable symbols N, R and K, illustrations for new parts may be abbreviated.

### ② Lev. (Level)

Level indication

The numbers below indicate the level of relativity towards the main part.

1 ----- Main parts (Assembly parts)

2 ----- Sub component included in " 1 ".

3 ----- Sub component included in " 2 ".

Note) Parts that are not for sale are partially illustrated but not listed.

### ③ Interchangeability Symbol

When a part change takes place, one of the following interchangeability symbols is indicated beside the part.

Symbol	Interchangeability	Contents note
N	Old $\begin{matrix} \leftarrow \text{Yes} \\ \text{No} \rightarrow \end{matrix}$ New	New Part is interchangeable for Old Part but Old Part is not interchangeable for New Part.
Q	Old $\begin{matrix} \leftarrow \text{No} \\ \text{Yes} \rightarrow \end{matrix}$ New	New Part is not interchangeable for Old Part but Old Part is interchangeable for New Part.
R	Old $\begin{matrix} \leftarrow \text{Yes} \\ \text{Yes} \rightarrow \end{matrix}$ New	New/ Old Parts are both interchangeable.
S	Old $\begin{matrix} \leftarrow \text{No} \\ \text{No} \rightarrow \end{matrix}$ New	New/ Old Parts are both not interchangeable.
W		Part newly added.
Z		Part discontinued.
F		Not interchangeable by a single part but interchangeable together with related parts.
K		Changes only for used parts quantities.

### ④ Effective Machine No.

When a part changes, the effective Machine No. will be indicated in the (A)-(F) column.

Product Symbol	Product No.	Product Symbol	Product No.
C	Clutch No. Compressor No.	F	Machine No. (Agricultural Equip.)
D	Drive No.	M	Machine No.
E	Engine No.		

Note 1) A date may follow the symbol. (Ex.) 1996.01

Note 2) "XXXXX" and "ZZZZZ" are for parts that could not be predicted or for engine models that could not be identified.

Note 3) (A=E00185) is the E (Engine Serial Number) for the column (A) model (in this case 4JH-DT) after the parts design change.

### ⑤ Remarks

Figures or alphabets (symbols) are entered in the remarks column.

The comments (remarks) on parts that are indicated at the bottom of the illustration are the same symbols as those stated above.

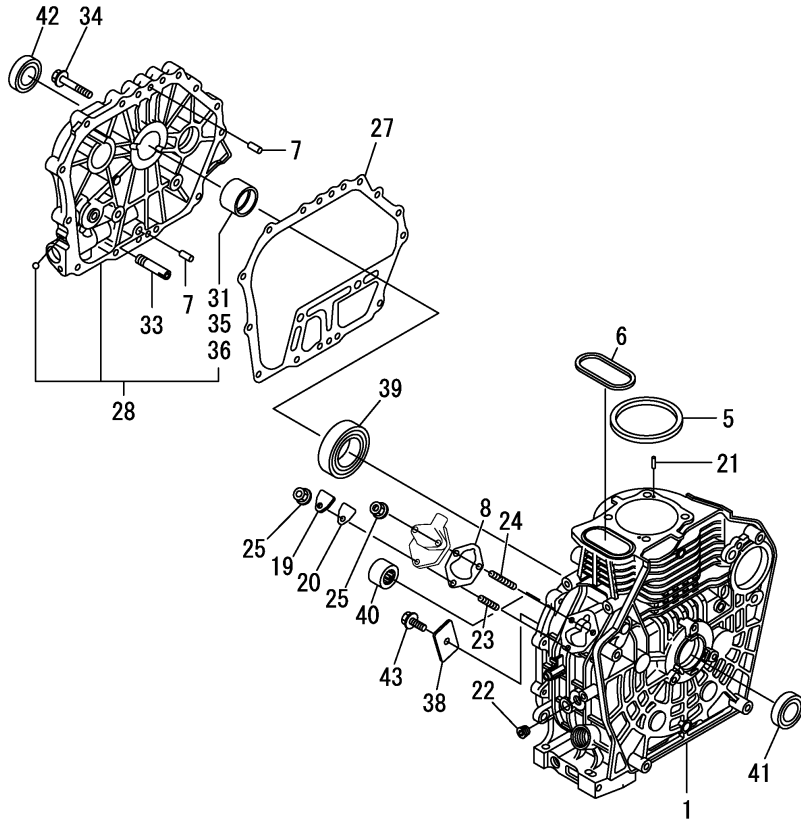
# CONTENTS

MODEL : L100N5EL2C9HAPM  
PC NO : 0CW10-G79500

Fig.No.	GROUP NAME
L100N5EL2C9HAPM	
1.	CYLINDER BLOCK
2.	DRAIN PLUG
3.	LABEL
4.	CYLINDER HEAD & BONNET
5.	INTAKE MANIHOLD
6.	AIR CLEANER
7.	EXHAUST MUFFLER
8.	CAMSHAFT
9.	CRANKSHAFT
10.	FLYWHEEL
11.	PISTON & CONNECTING ROD
12.	BALANCER SHAFT
13.	LUB.OIL PUMP & GOVERNOR
14.	OIL PRESSURE SWITCH
15.	COVER
16.	COOLING FAN CASE
17.	F.I.PUMP & F.I.VALVE
18.	SPEED CONTROL DEVICE
19.	STARTING MOTOR
20.	ELECTRICAL EQUIPMENT
21.	DYNAMO
22.	ACCESSORIES
23.	TOOL & GASKET SET

Fig.No. GROUP NAME

Fig.1. CYLINDER BLOCK



0CW10-G79500 1. CYLINDER BLOCK

(A)=L100N5EL2C9HAPM

(B)=

(C)=

(D)=

(E)=

(F)=

REF.	LEV.	PARTS NO.	DESCRIPTION	Q'TY						I	R
				(A)	(B)	(C)	(D)	(E)	(F)		
1	1	114310-01020	BLOCK ASSY, CYLINDER	1							
5	1	114695-01341	GASKET, HEAD 0.5	1							
6	1	114699-01380	O-RING	1							
7	1	114299-01600	PIN, 8X12	2							
8	1	114299-01800	SHIM SET	1							
19	1	114299-01830	COVER	1							
20	1	114250-01841	GASKET	1							
21	1	22312-040080	PIN, PARALLEL	2							
22	1	23875-020000	PLUG	1							
23	1	26226-060182	STUD	1							
24	1	26226-060222	STUD	2							
25	1	26366-060002	NUT	3							
27	1	114699-01410	GASKET	1							
28	1	114310-01450	COVER(D, CRANK CASE	1							
31	2	114650-02100	METAL, MAIN	1							1
33	1	114299-35150	PIPE	1							
34	1	26106-080352	BOLT	16							
35	1	114650-02200	METAL, MAIN 0.25	1							2
36	1	114650-02210	METAL, MAIN 0.50	1							3
38	1	114299-02030	RETAINER	1							
39	1	114650-02150	BEARING, BALL	1							
40	1	24162-152220	BEARING, NEEDLE	1							
41	1	24423-355008	SEAL, OIL	1							
42	1	24423-355008	SEAL, OIL	1							
43	1	26106-080122	BOLT	1							

Remarks

(1) Spare parts.

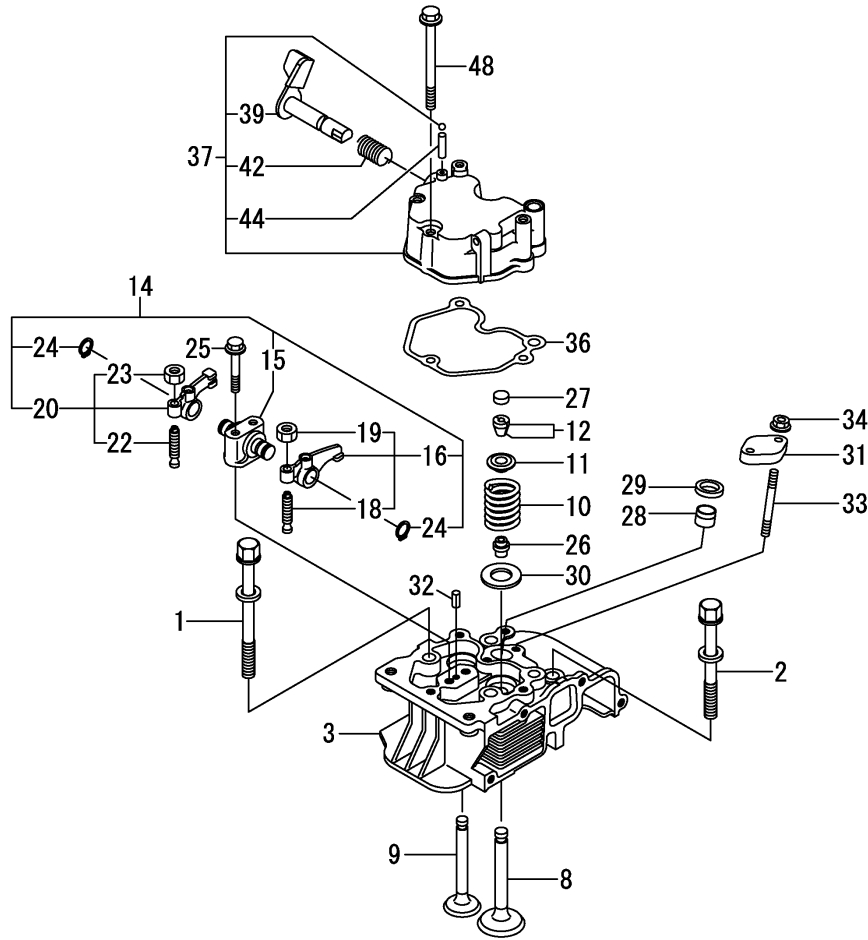
(2) Under sized(U.S.=0.25)parts.

(3) Under sized(U.S.=0.50)parts.





Fig.4. CYLINDER HEAD & BONNET



OCW10-G79500 4. CYLINDER HEAD & BONNET

(A)=L100N5EL2C9HAPM

(B)=

(C)=

(D)=

(E)=

(F)=

REF.	LEV.	PARTS NO.	DESCRIPTION	QTY						I	R
				(A)	(B)	(C)	(D)	(E)	(F)		
1	1	114310-01200	BOLT, CYL.HEAD A	2							
2	1	114310-01210	BOLT, CYL.HEAD B	2							
3	1	11432C-11020	HEAD ASSY, CYLINDER	1							
8	1	11431C-11100	VALVE	1							
9	1	11431C-11110	VALVE	1							
10	1	114310-11120	SPRING, VALVE	2							
11	1	114310-11180	RETAINER, SPRING	2							
12	1	114310-11930	COTTER ASSY	2							
14	1	11431C-11250	SUPPORT ASSY	1							
15	2	11431C-11260	SUPPORT	1							
16	2	11431C-11650	ARM, ROCKER	1							
18	3	114250-11240	SCREW	1							
19	3	26856-060002	NUT	1							
20	2	11431C-11660	ARM, ROCKER	1							
22	3	114250-11240	SCREW	1							
23	3	26856-060002	NUT	1							
24	2	22242-000150	RING	2							
25	1	114310-11290	BOLT, SUPPORT	2							
26	1	114650-11341	SEAL, VALVE STEM	2							
27	1	104211-11370	CAP	2							
28	1	114240-11450	PROTECTOR	1							
29	1	114240-11550	SEAT	1							
30	1	114699-11600	WASHER	2							
31	1	114210-11901	RETAINER, NOZZLE	1							
32	1	22351-040008	PIN, SPRING	1							
33	1	26226-060552	STUD	2							
34	1	26366-060002	NUT	2							
36	1	114310-11310	GASKET, BONNET	1							
37	1	114310-11950	BONNET ASSY, HEAD	1							
39	2	114210-03590	DECOMPRESSION ASSY	1							
42	2	114299-03640	SPRING	1							
44	2	22312-030160	PIN, PARALLEL	1							
48	1	26106-060652	BOLT	3							



Fig.5. INTAKE MANIHOLD

(A)=L100N5EL2C9HAPM

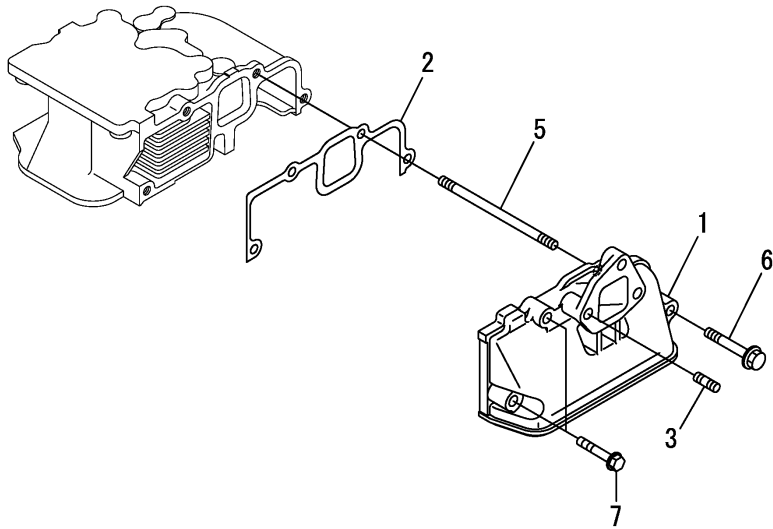
(B)=

(C)=

(D)=

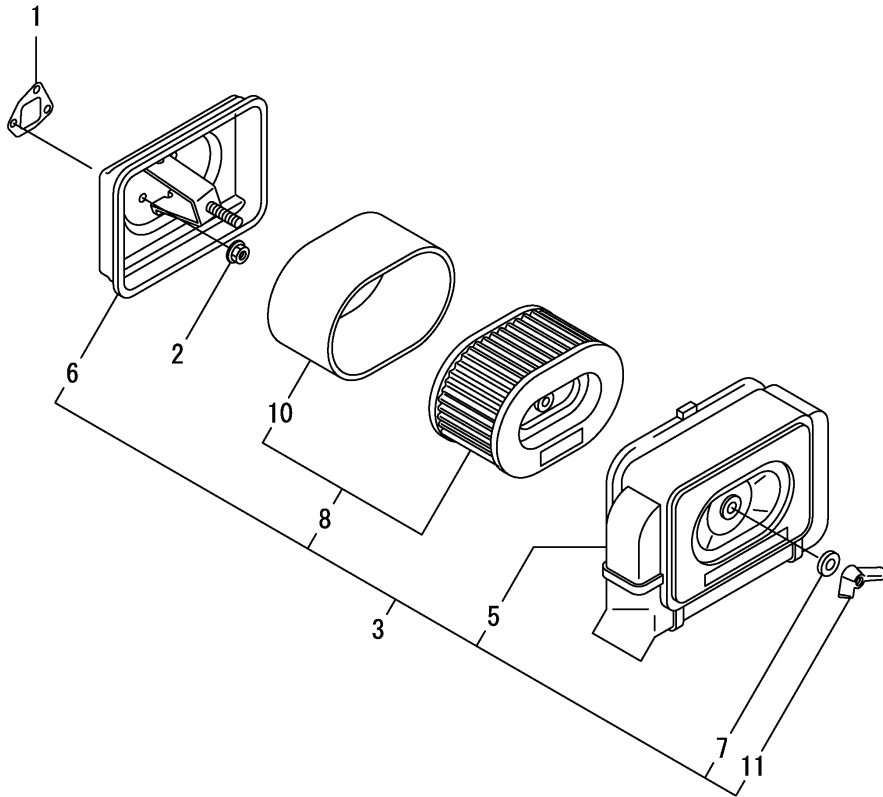
(E)=

(F)=



REF.	LEV.	PARTS NO.	DESCRIPTION	Q'TY						I	R
				(A)	(B)	(C)	(D)	(E)	(F)		
1	1	114310-12050	MANIFOLD, INTAKE	1							
2	1	114310-12210	GASKET, AIR CLEANER	1							
3	1	26226-060162	STUD	2							
5	1	114310-45360	STUD BOLT, TOP COVER	1							
6	1	26106-060402	BOLT	1							
7	1	26106-060352	BOLT	2							

Fig.6. AIR CLEANER



0CW10-G79500 6. AIR CLEANER

(A)=L100N5EL2C9HAPM

(B)=

(C)=

(D)=

(E)=

(F)=

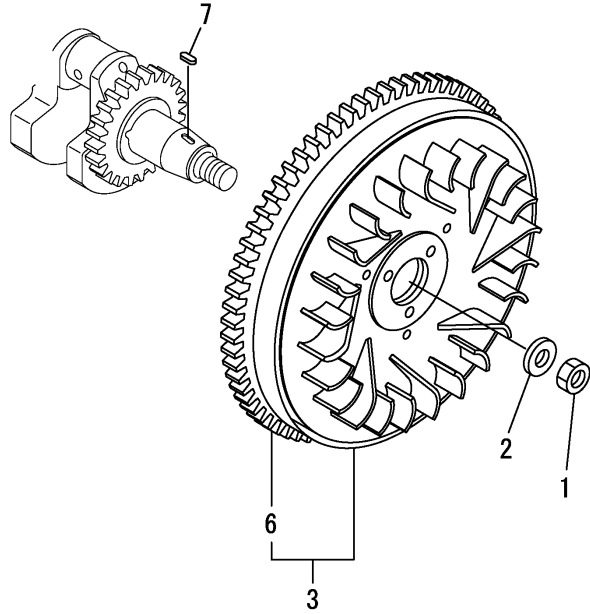
REF.	LEV.	PARTS NO.	DESCRIPTION	QTY						I	R
				(A)	(B)	(C)	(D)	(E)	(F)		
1	1	114699-12210	GASKET	1							
2	1	114299-12300	NUT	3							
3	1	783671-12560	AIR CLEANER ASSY	1							
5	2	183671-12520	COVER ASSY	1							
6	2	114980-12530	CASE ASSY	1							
7	2	114252-12560	WASHER	1							
8	2	114650-12590	ELEMENT ASSY	1							
10	3	114650-12550	FILTER, PRE	1							
11	2	114252-12550	NUT	1							







Fig.10. FLYWHEEL



0CW10-G79500 10. FLYWHEEL

(A)=L100N5EL2C9HAPM

(B)=

(C)=

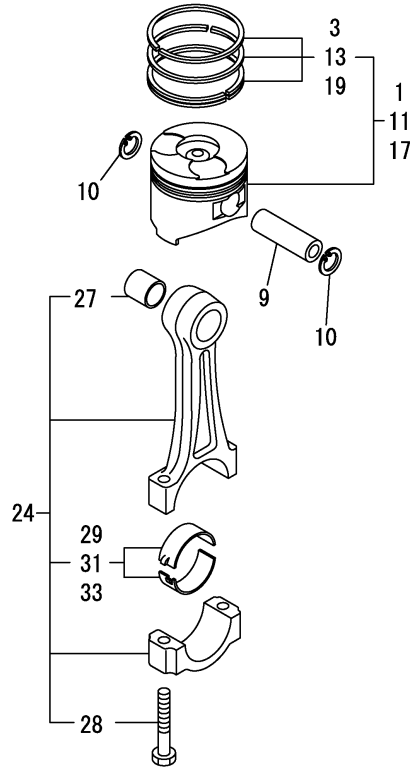
(D)=

(E)=

(F)=

REF.	LEV.	PARTS NO.	DESCRIPTION	Q'TY						I	R
				(A)	(B)	(C)	(D)	(E)	(F)		
1	1	114699-21220	NUT	1							
2	1	114699-21550	WASHER	1							
3	1	114699-21600	FLYWHEEL ASSY, DE	1							
6	2	114699-21630	RING, GEAR	1							
7	1	22512-050140	KEY	1							

Fig.11. PISTON & CONNECTING ROD



0CW10-G79500 11. PISTON & CONNECTING ROD

(A)=L100N5EL2C9HAPM

(B)=

(C)=

(D)=

(E)=

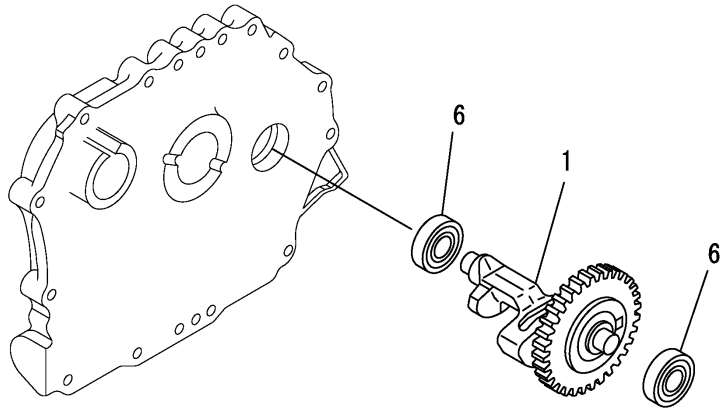
(F)=

REF.	LEV.	PARTS NO.	DESCRIPTION	Q'TY						I	R
				(A)	(B)	(C)	(D)	(E)	(F)		
1	1	714320-22720	PISTON W/RINGS (D)	1							
3	2	714310-22500	RING SET, PISTON	1							
9	1	114699-22300	PIN	1							
10	1	114310-22500	SEEGER RING, J23	2							
11	1	714320-22620	PISTON W/RING .25OS	1							1
13	2	714310-22540	RING SET O.S=0.25	1							1
17	1	714320-22580	PISTON W/RING .50OS	1							2
19	2	714310-22550	RING SET O.S=0.50	1							2
24	1	71431C-23010	ROD ASSY	1							
27	3	124060-23100	METAL, PISTON PIN	1							
28	3	114310-23200	BOLT, CONNECTING ROD	2							
29	2	714650-23600	METAL, CRANK PIN	1							
31	1	714650-23610	METAL ASSY, 0.25	1							3
33	1	714650-23620	METAL, CRANK PIN .50	1							4

Remarks

- (1)Over sized(O.S=0.25)parts.
- (2)Over sized(O.S=0.50)parts.
- (3)Under sized(U.S=0.25)parts.
- (4)Under sized(U.S=0.50)parts.

Fig.12. BALANCER SHAFT



0CW10-G79500 12. BALANCER SHAFT

(A)=L100N5EL2C9HAPM

(B)=

(C)=

(D)=

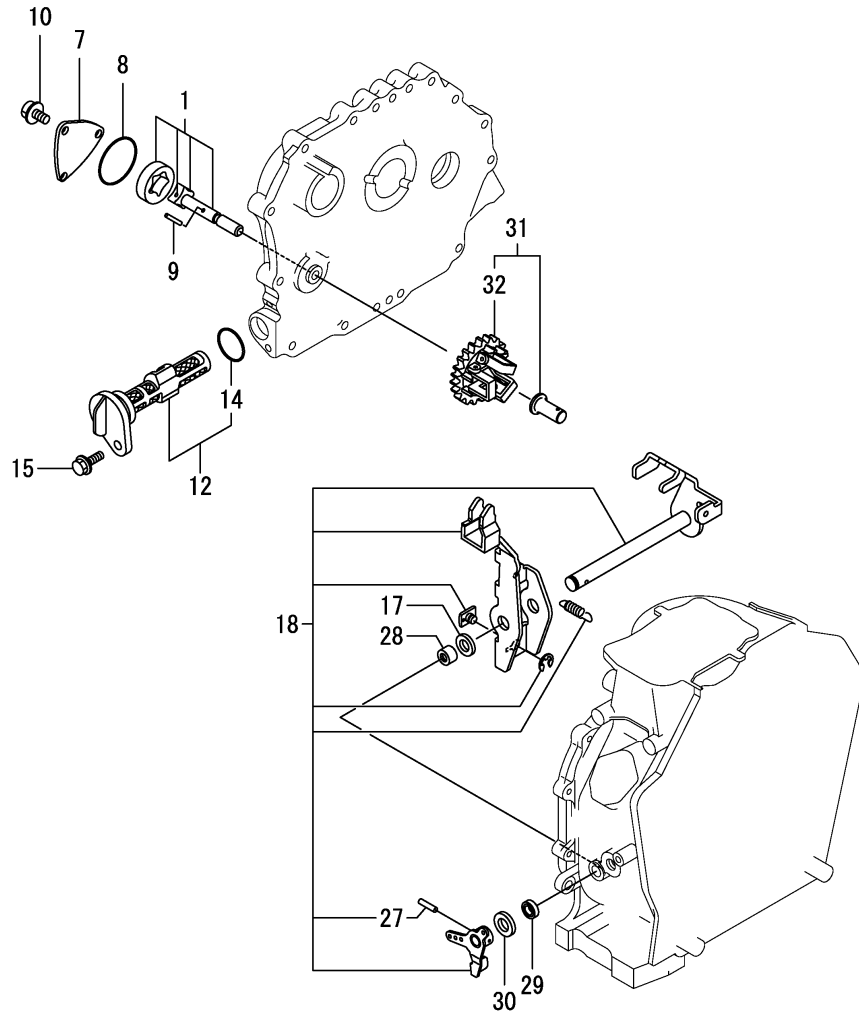
(E)=

(F)=

REF.	LEV.	PARTS NO.	DESCRIPTION	Q'TY						I	R
				(A)	(B)	(C)	(D)	(E)	(F)		
1	1	714310-28510	SHAFT ASSY, BALANCER	1							
6	1	24101-063040	BEARING, BALL	2							



Fig.13. LUB.OIL PUMP & GOVERNOR



(A)=L100N5EL2C9HAPM

(B)=

(C)=

(D)=

(E)=

(F)=

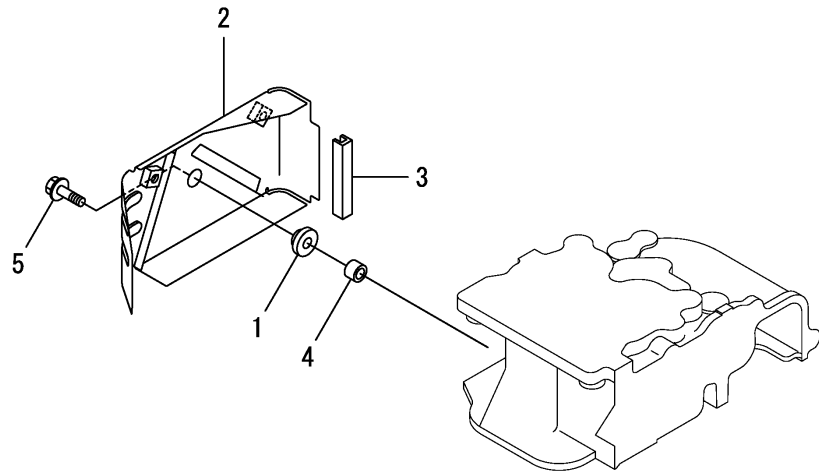
REF.	LEV.	PARTS NO.	DESCRIPTION	QTY						I	R
				(A)	(B)	(C)	(D)	(E)	(F)		
1	1	114650-32010	PUMP ASSY, OIL	1							
7	1	114299-32070	COVER	1							
8	1	114299-32570	O-RING	1							
9	1	22312-030160	PIN, PARALLEL	1							
10	1	26106-060122	BOLT	3							
12	1	114299-35110	FILTER ASSY	1							
14	2	24341-000224	O-RING	1							
15	1	26106-060162	BOLT	1							
17	1	114299-61190	WASHER	1							
18	1	114311-61500	LEVER ASSY, GOVERNOR	1							1
27	2	22322-030200	PIN, TAPER	1							
28	1	114770-61520	BEARING, NEEDLE	2							
29	1	114299-61600	SEAL	1							
30	1	114770-61610	WASHER	1							
31	1	714210-61701	GOVERNOR ASSY	1							
32	2	114210-61290	WEIGHT ASSY, GOVERNOR	1							

Remarks

(1) On a guarantee of quality component parts shall not be sold.



Fig.15. COVER



0CW10-G79500 15. COVER

(A)=L100N5EL2C9HAPM

(B)=

(C)=

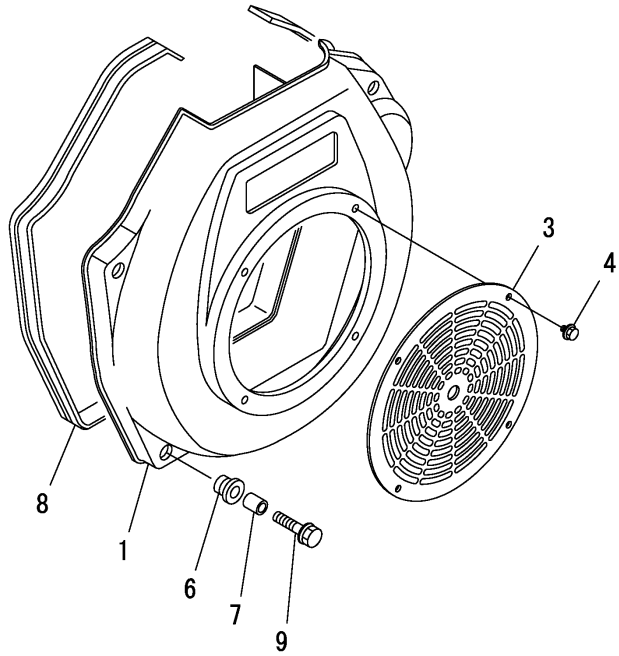
(D)=

(E)=

(F)=

REF.	LEV.	PARTS NO.	DESCRIPTION	Q'TY						I	R
				(A)	(B)	(C)	(D)	(E)	(F)		
1	1	114299-45220	GROMMET	1							
2	1	114310-45260-1	COVER B, SIDE	1							
3	1	114399-45320	RUBBER, SEAL	1							
4	1	114399-45340	COLLAR	1							
5	1	26106-060202	BOLT	1							

Fig.16. COOLING FAN CASE



0CW10-G79500 16. COOLING FAN CASE

(A)=L100N5EL2C9HAPM

(B)=

(C)=

(D)=

(E)=

(F)=

REF.	LEV.	PARTS NO.	DESCRIPTION	QTY						I	R
				(A)	(B)	(C)	(D)	(E)	(F)		
1	1	114310-45150	CASE, COOLING FAN	1							
3	1	114699-45180	COVER, DUST	1							
4	1	26106-060082	BOLT	4							
6	1	114299-45301	RUBBER, CUSHION	4							
7	1	114299-45310	COLLAR	4							
8	1	114699-45331	SEAL	1							
9	1	114299-45350	BOLT, FAN CASE	4							

Fig.17. F.I.PUMP & F.I.VALVE

(A)=L100N5EL2C9HAPM

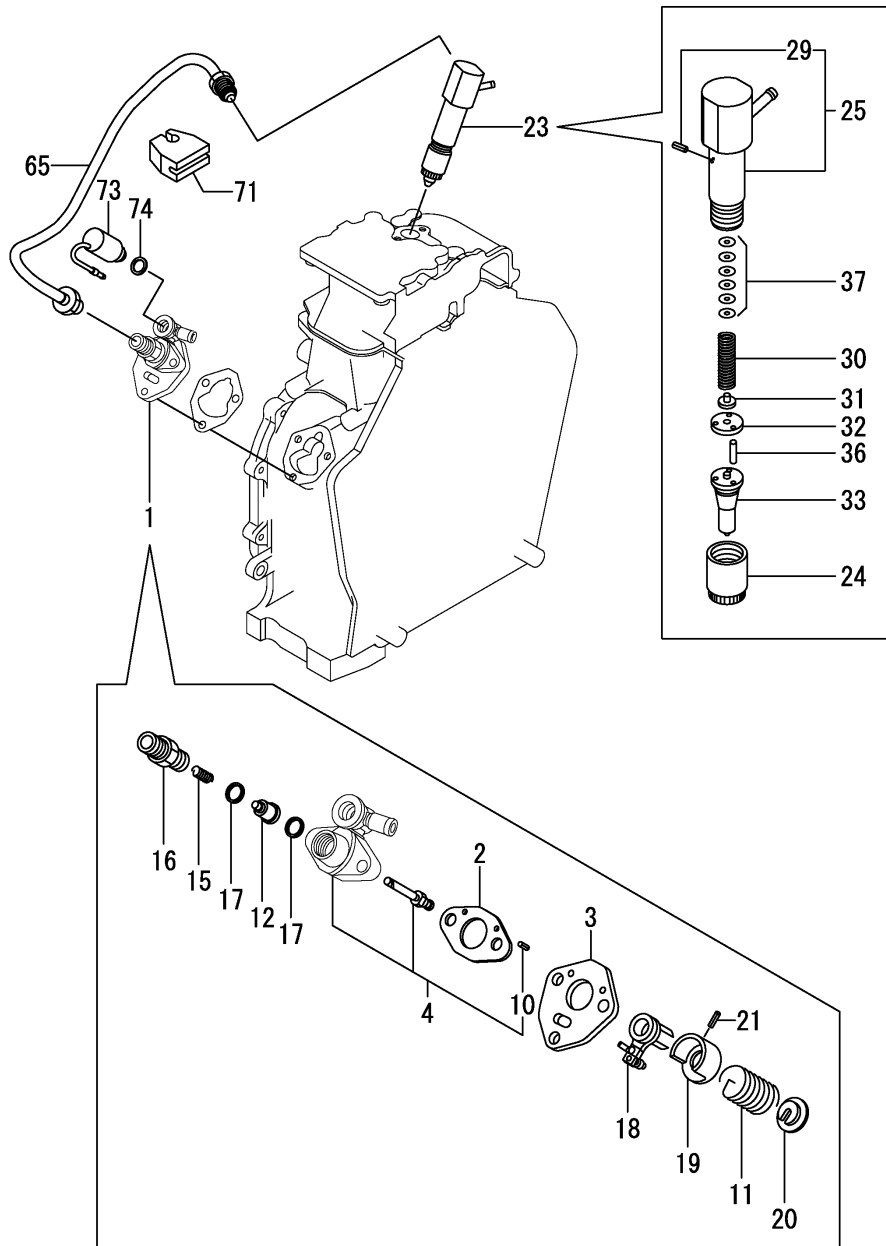
(B)=

(C)=

(D)=

(E)=

(F)=



REF.	LEV.	PARTS NO.	DESCRIPTION	QTY						I	R
				(A)	(B)	(C)	(D)	(E)	(F)		
1	1	714339-51310	PUMP ASSY, INJECTION	1							
2	2	105546-51020	GASKET	1							
3	2	114250-51080	PLATE	1							
4	2	114339-51200	BODY ASSY, PUMP	1							
10	4	22351-020006	PIN, SPRING	2							
11	2	114250-51160	SPRING	1							
12	2	114650-51300	VALVE ASSY, DELIVERY	1							
15	2	105546-51330	SPRING	1							
16	2	114250-51340	HOLDER	1							
17	2	124550-51350	GASKET	2							
18	2	114250-51500	LEVER, CONTROL	1							
19	2	114250-51640	SPRING SEAT	1							
20	2	114250-51650	SPRING SEAT	1							
21	2	22351-030008	PIN, SPRING	1							
23	1	714339-53200	VALVE ASSY, INJECTION	1							
24	2	114250-53080	NUT	1							
25	2	114339-53100	HOLDER ASSY	1							
29	3	22351-025005	PIN, SPRING	1							
30	2	114250-53120	SPRING	1							
31	2	114250-53130	SPRING SEAT	1							
32	2	114250-53140	PLATE	1							
33	2	114339-53200	NOZZLE ASSY	1							
36	2	114250-53210	PIN	2							
37	2	119803-53400	SHIM SET	4							
65	1	114310-59800	PIPE ASSY, INJECTION	1							
71	1	114699-59850	SUPPORT, PIPE	1							
73	1	114110-76901	SOLENOID, MAGNETIC	1							
74	1	114299-83020	GASKET, 10X1.2	1							

Fig.18. SPEED CONTROL DEVICE

(A)=L100N5EL2C9HAPM

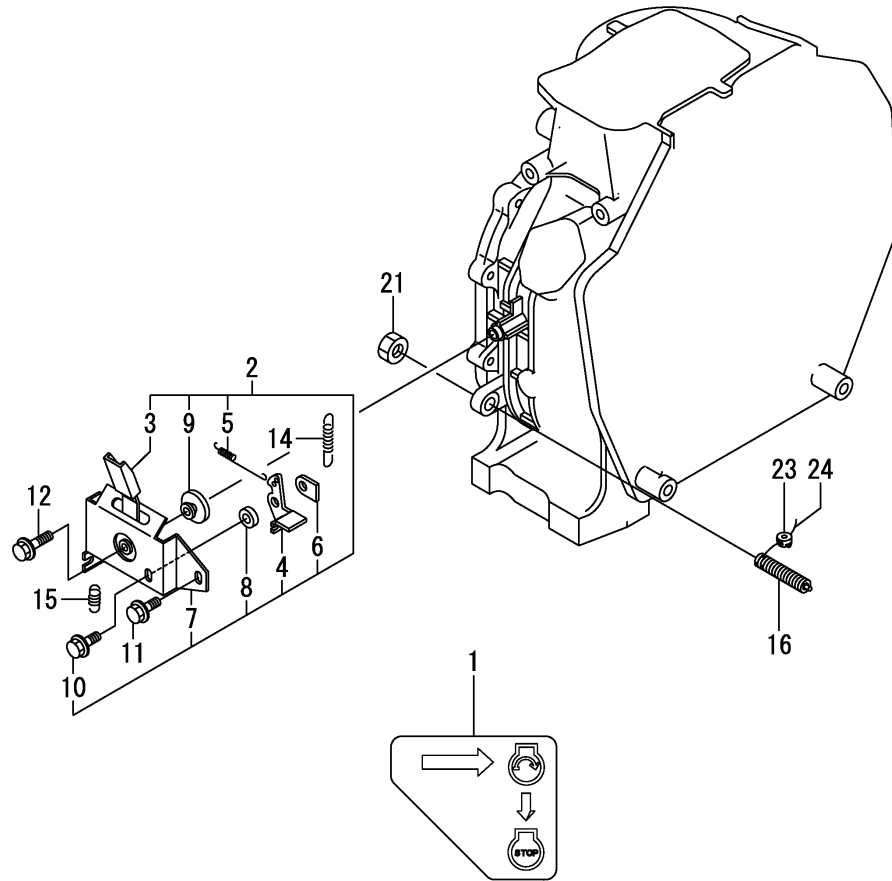
(B)=

(C)=

(D)=

(E)=

(F)=



REF.	LEV.	PARTS NO.	DESCRIPTION	Q'TY						I	R
				(A)	(B)	(C)	(D)	(E)	(F)		
1	1	114220-07150	LABEL, CONSTANT SPEE	1							
2	1	114210-66511	BRACKET ASSY, HANDLE	1							
3	2	114210-66300	HANDLE	1							
4	2	183250-66321	LEVER	1							
5	2	114210-66330	SPRING, LOCK LEVER	1							
6	2	183250-66341	NUT	1							
7	2	114210-66350	BRACKET	1							
8	2	183250-66361	COLLAR	1							
9	2	183250-66371	COLLAR	1							
10	2	26106-060162	BOLT	1							
11	1	26106-060142	BOLT	1							
12	1	26106-060202	BOLT	1							
14	1	114320-66020	SPRING, REGULATOR	1							
15	1	114299-66201	SPRING, RETURN	1							
16	1	114211-66600	LIMITER ASSY, FUEL	1							
21	1	26776-100002	NUT	1							
23	1	114780-61090	TIN	1							
24	1	22451-060000	WIRE	1							

Fig.19. STARTING MOTOR

(A)=L100N5EL2C9HAPM

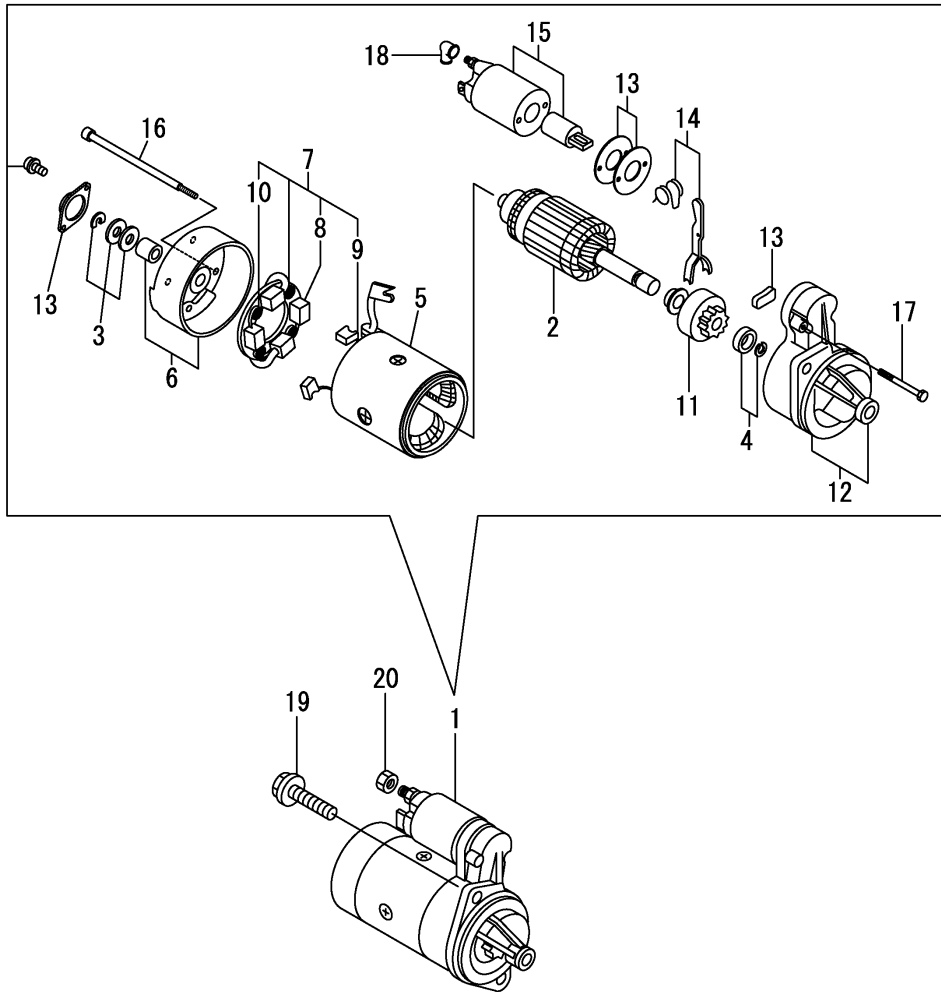
(B)=

(C)=

(D)=

(E)=

(F)=



REF.	LEV.	PARTS NO.	DESCRIPTION	QTY						I	R
				(A)	(B)	(C)	(D)	(E)	(F)		
1	1	114362-77011	STARTER	1							
2	2	114381-77110	ARMATURE	1							
3	2	X2114811000	WASHER KIT, THRUST	1							
4	2	X2114715500	STOPPER SET	1							
5	2	114381-77130	COIL ASSY, FIELD	1							
6	2	114381-77140	COVER	1							
7	2	114371-77160	HOLDER ASSY, BRUSH	1							
8	3	114371-79040	BRUSH	2							
9	3	114371-79050	BRUSH	1							
10	3	114371-79060	SPRING	4							
11	2	X211485016	PINION ASSY	1							
12	2	114381-77151	CASE ASSY	1							
13	2	114371-77170	COVER ASSY, DUST	1							
14	2	114371-77180	LEVER KIT	1							
15	2	124298-77020	SWITCH	1							
16	2	124195-77770	BOLT, THROUGH	2							
17	2	114371-79070	BOLT	2							
18	2	X2114274200	COVER	1							
19	1	26106-100302	BOLT	2							
20	1	26716-080002	NUT	1							

Fig.20. ELECTRICAL EQUIPMENT

(A)=L100N5EL2C9HAPM

(B)=

(C)=

(D)=

(E)=

(F)=

REF.	LEV.	PARTS NO.	DESCRIPTION	Q'TY						I	R
				(A)	(B)	(C)	(D)	(E)	(F)		
1	1	114399-77550	REG. & HARNESS ASSY	1							
3	3	114399-77400	BRACKET, HARNESS	1							
4	3	114399-77540	HARNESS, WIRE	1							
5	4	114399-78000	FUSE(20A	1							
6	2	114399-77710	REGULATOR	1							
7	2	26023-040102	SCREW	2							
8	1	26106-060122	BOLT	2							
9	1	26106-060202	BOLT	2							

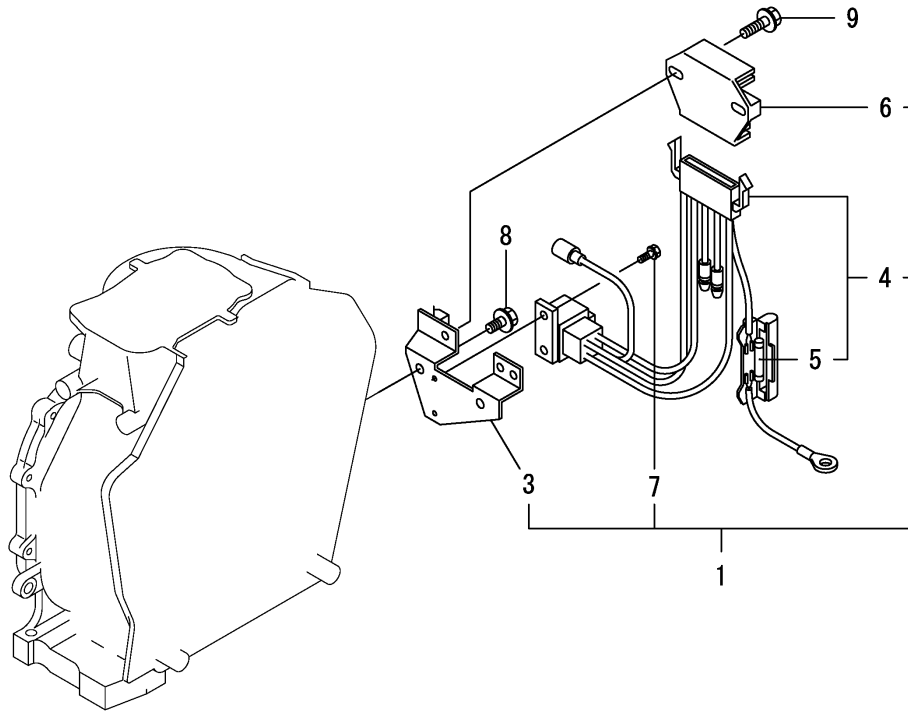
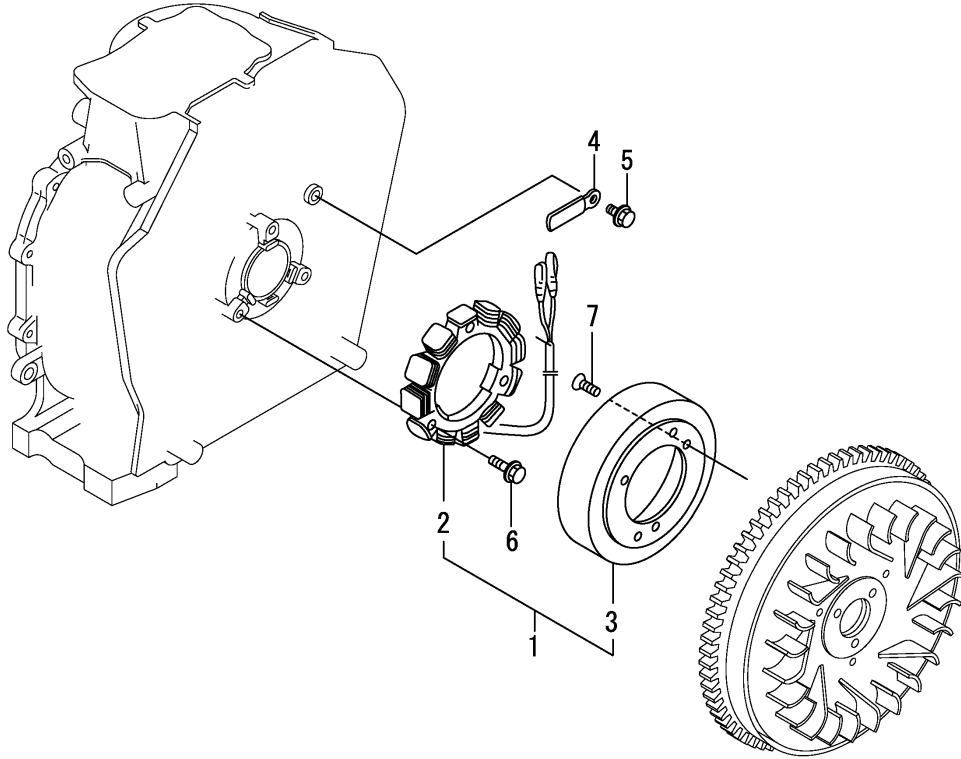




Fig.21. DYNAMO

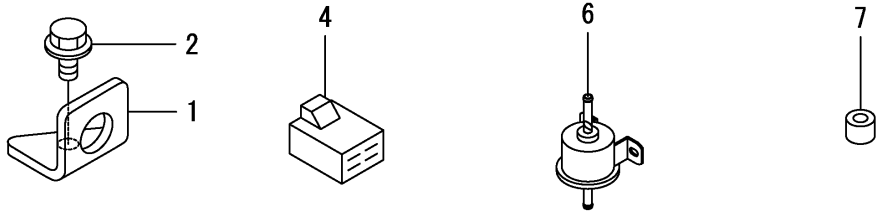


(A)=L100N5EL2C9HAPM  
(B)=  
(C)=

(D)=  
(E)=  
(F)=

REF.	LEV.	PARTS NO.	DESCRIPTION	Q'TY						I	R
				(A)	(B)	(C)	(D)	(E)	(F)		
1	1	114399-78260	DYNAMO ASSY	1							
2	2	114399-78730	STATOR ASSY	1							
3	2	114399-78740	WHEEL	1							
4	1	160710-78710	CLAMP	1							
5	1	26106-060122	BOLT	1							
6	1	26106-060202	BOLT	3							
7	1	26577-060142	SCREW M 6X 14	3							

Fig.22. ACCESSORIES



0CW10-G79500 22. ACCESSORIES

(A)=L100N5EL2C9HAPM

(B)=

(C)=

(D)=

(E)=

(F)=

REF.	LEV.	PARTS NO.	DESCRIPTION	Q'TY						I	R
				(A)	(B)	(C)	(D)	(E)	(F)		
1	1	114399-07900	LIFTER	1							
2	2	26106-080202	BOLT	1							
4	1	114351-77520	COUPLER	1							
6	1	119225-52102	PUMP ASSY, FEED	1							
7	1	114299-59850	ORIFICE	1							

Fig.23. TOOL & GASKET SET

(A)=L100N5EL2C9HAPM

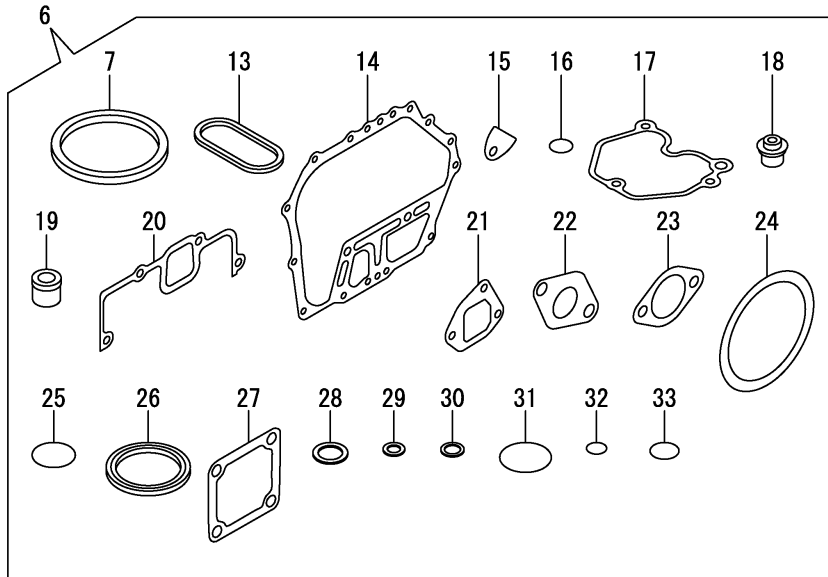
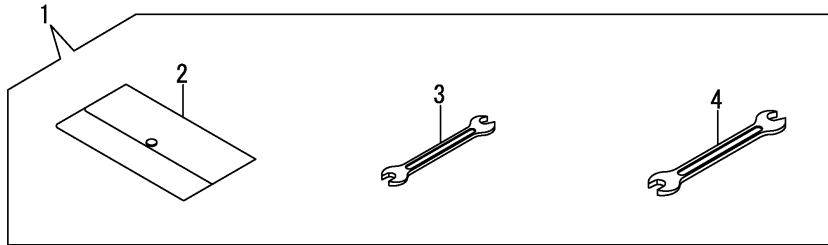
(B)=

(C)=

(D)=

(E)=

(F)=



REF.	LEV.	PARTS NO.	DESCRIPTION	QTY						I	R	
				(A)	(B)	(C)	(D)	(E)	(F)			
1	1	114299-92590	TOOLBOX	1								
2	2	114299-92600	BAG, TOOL	1								
3	2	114299-92710	WRENCH	1								
4	2	114299-92720	WRENCH	1								
6	1	114320-92600	GASKET SET	1								1
7	2	114695-01331	GASKET ASSY,CYL.HEAD	1								
13	2	114699-01380	O-RING	1								
14	2	114699-01410	GASKET	1								
15	2	114250-01841	GASKET	1								
16	2	114299-01950	O-RING	2								
17	2	114310-11310	GASKET, BONNET	1								
18	2	114650-11341	SEAL, VALVE STEM	2								
19	2	114771-11461	GASKET	1								
20	2	114310-12210	GASKET, AIR CLEANER	1								
21	2	114699-12210	GASKET	2								
22	2	114310-13200	GASKET, MUFFLER	1								
23	2	183671-13211	GASKET, PIPE	1								
24	2	114399-21980	GASKET	1								
25	2	114299-32570	O-RING	1								
26	2	160393-55050	GASKET	4								
27	2	129100-77510	GASKET	3								
28	2	22190-160002	WASHER, SEAL	2								
29	2	23414-080000	GASKET	1								
30	2	23414-120000	GASKET	1								
31	2	24311-000400	O-RING	1								
32	2	24341-000150	O-RING	2								
33	2	24341-000224	O-RING	1								

Remarks  
(1)Optional parts.

N:Old  $\xrightarrow{\text{Yes}}$  New, Q:Old  $\xrightarrow{\text{No}}$  New, R:Old  $\xrightarrow{\text{Yes}}$  New, S:Old  $\xrightarrow{\text{No}}$  New, W:Add, Z:Discontinued, F:Interchangeable by set, K:Q'ty Change

## Part Number Index

All parts are stipulated in the order of part numbers.

(Depending on the area in which the part is used.)

This index will display the location of the part according to each part number.

## PARTS No. INDEX

PARTS No.	Fig.	Ref.No.
104211-11370	4	27
105546-51020	17	2
105546-51330	17	15
114110-76901	17	73
114210-03590	4	39
114210-11901	4	31
114210-14300	8	7
114210-61290	13	32
114210-66300	18	3
114210-66330	18	5
114210-66350	18	7
114210-66511	18	2
114211-66600	18	16
114220-07130	3	9
114220-07150	3	5
	18	1
114240-11450	4	28
114240-11550	4	29
114250-01841	1	20
	23	15
114250-11240	4	18
		22
114250-51080	17	3
114250-51160	17	11
114250-51340	17	16
114250-51500	17	18
114250-51640	17	19
114250-51650	17	20
114250-53080	17	24
114250-53120	17	30
114250-53130	17	31
114250-53140	17	32
114250-53210	17	36
114252-12550	6	11
114252-12560	6	7
114299-01600	1	7
114299-01690	2	1
114299-01800	1	8
114299-01830	1	19
114299-01950	2	4
	23	16
114299-02030	1	38
114299-03640	4	42
114299-07111	3	2
114299-12300	6	2
114299-32070	13	7
114299-32570	13	8
	23	25
114299-35110	13	12
114299-35150	1	33

PARTS No.	Fig.	Ref.No.
114299-45220	15	1
114299-45301	16	6
114299-45310	16	7
114299-45350	16	9
114299-59850	22	7
114299-61190	13	17
114299-61600	13	29
114299-66201	18	15
114299-83020	17	74
114299-92590	23	1
114299-92600	23	2
114299-92710	23	3
114299-92720	23	4
114310-01020	1	1
114310-01200	4	1
114310-01210	4	2
114310-01450	1	28
114310-11120	4	10
114310-11180	4	11
114310-11290	4	25
114310-11310	4	36
	23	17
114310-11930	4	12
114310-11950	4	37
114310-12050	5	1
114310-12210	5	2
	23	20
114310-13200	7	1
	23	22
114310-14200	8	6
114310-14400	8	12
114310-22500	11	10
114310-23200	11	28
114310-45150	16	1
114310-45260-1	15	2
114310-45360	5	5
114310-59800	17	65
114311-61500	13	18
11431C-11100	4	8
11431C-11110	4	9
11431C-11250	4	14
11431C-11260	4	15
11431C-11650	4	16
11431C-11660	4	20
11431C-21840	9	1
114320-66020	18	14
114320-92600	23	6
11432C-11020	4	3
114339-51200	17	4
114339-53100	17	25

PARTS No.	Fig.	Ref.No.
114339-53200	17	33
114351-77520	22	4
114362-77011	19	1
114371-77160	19	7
114371-77170	19	13
114371-77180	19	14
114371-79040	19	8
114371-79050	19	9
114371-79060	19	10
114371-79070	19	17
114381-77110	19	2
114381-77130	19	5
114381-77140	19	6
114381-77151	19	12
114399-07900	22	1
114399-21980	23	24
114399-45320	15	3
114399-45340	15	4
114399-77400	20	3
114399-77540	20	4
114399-77550	20	1
114399-77710	20	6
114399-78000	20	5
114399-78260	21	1
114399-78730	21	2
114399-78740	21	3
114650-02100	1	31
114650-02150	1	39
114650-02200	1	35
114650-02210	1	36
114650-11341	4	26
	23	18
114650-12550	6	10
114650-12590	6	8
114650-32010	13	1
114650-51300	17	12
114695-01331	23	7
114695-01341	1	5
114699-01380	1	6
	23	13
114699-01410	1	27
	23	14
114699-01760	2	2
114699-11600	4	30
114699-12210	6	1
	23	21
114699-21220	10	1
114699-21550	10	2
114699-21600	10	3
114699-21630	10	6

PARTS No.	Fig.	Ref.No.
114699-22300	11	9
114699-45180	16	3
114699-45331	16	8
114699-59850	17	71
114770-61520	13	28
114770-61610	13	30
114771-11461	23	19
114780-61090	18	23
114980-12530	6	6
119225-52102	22	6
119803-53400	17	37
124060-23100	11	27
124195-77770	19	16
124298-77020	19	15
124550-51350	17	17
129100-77510	23	27
160393-55050	23	26
160710-78710	21	4
183250-39450	14	1
183250-66321	18	4
183250-66341	18	6
183250-66361	18	8
183250-66371	18	9
183671-12520	6	5
183671-13211	23	23
714210-61701	13	31
714310-22500	11	3
714310-22540	11	13
714310-22550	11	19
714310-28510	12	1
71431C-23010	11	24
714320-22580	11	17
714320-22620	11	11
714320-22720	11	1
71432C-14010	8	1
714339-51310	17	1
714339-53200	17	23
714650-23600	11	29
714650-23610	11	31
714650-23620	11	33
783671-12560	6	3
X2114274200	19	18
X2114715500	19	4
X2114811000	19	3
X211485016	19	11



***YANMAR CO., LTD.***